



**COCKATOOURS**  
— SPREAD YOUR WINGS —

# 2025

## KIMBERLEY

### Darwin to Broome

### 17-Day Camping Tour

**\$5,970**



### Kimberley Overview

The Kimberley is renowned as one of Australia's most gorge-ous regions! This itinerary has been carefully designed to incorporate the best of several major regions from Broome to Darwin and we honestly believe this is the best Kimberley itinerary we've seen!

Starting in Darwin and finishing in Broome, this 17-day extravaganza will take you to the best of the best in the Kimberley. This tour is jam packed with gorges, swimming, rock art, history and culture. Designed to flow on to our Gulf Savannah tour, the two make a perfect combination of outback, adventure, serenity and relaxation. This is as good as the Kimberley gets!

#### Key

**B:** Breakfast, **L:** Lunch, **D:** Dinner  
**H:** Hike Shoes Needed, **T:** Togs Needed,  
**E:** Washing Facilities, **S:** Shops

### Itinerary

#### Day 1 (LD, T) Victoria River

Pickups starting at 7am. Our first day is mostly a drive day to position us well for the next few days. On the way, we'll pop in to the brilliantly blue Katherine Hot Springs. Tonight we'll have dinner out together & get to know your group for the next 17 days.

#### Day 2 (BLD) Lake Argyle

Having done the hard yards yesterday, we'll have a more relaxing pace today. Heading west, we witness a change of scenery as we pass some stunning ranges. We enter WA and our first stop will be the old Durack Station and the Homestead Museum. Tonight we camp at Lake Argyle. Here you can relax by the lake or go for a paddle.

#### Day 3 (BLD, TFS) Kununurra

This morning we head into Kununurra and explore some of the farms and businesses in the area that have flourished, including the sandalwood plantations and factory & hoochery rum distillery. We'll then head to camp before our Ord River cruise, one of the highlights of the region. We'll embark on a journey up Lake Kununurra to the dam wall and then back. It finishes with a sunset from the boat. Tonight, we have dinner out together.

#### Day 4 (BLD) Purnululu

Today we head south on the Great Northern Highway to Purnululu (Bungle Bungles)! Today is a nicely paced drive day which will give us ample time to set up camp, as tomorrow we have a very early start! We'll spend 2 nights here to explore the wonders of the Bungle Bungles!

#### Day 5 (BLD, H) Purnululu

We start our day watching the sun rise over the domes, before heading to Cathedral Gorge and Piccaninny Lookout to witness Purnululu's full beauty from above! Next you'll get in a helicopter and fly over the impressive Purnululu domes. In the early afternoon we will stand in the massive crack that has slowly widened over the millennia at Echidna Chasm. We wrap up a big day watching the sun set over the domes again!



#### Day 6 (BLD, HF) El Questro

This morning we hike 'Mini Palms', a trail meandering through the domes to an amphitheatre engulfed by huge walls with mini palms growing at the base. An easy day has us heading back north. This afternoon we make our way into the gorgeous El Questro Station and put our feet up at camp for the rest of the day! We are here for 3 nights!

#### Day 7 (BLD, HTF) El Questro

With an early start this morning, we head to Zebedee Springs, an easy walk, where we will soak our bodies in thermal waters! After Zebedee and lunch we'll head out to tackle the incredible El Questro Gorge. This evening we'll watch the sunset back at our camp at El Questro.

#### Day 8 (BL, HTFS) El Questro

Today we head back towards the park entrance and to Emma Gorge. A challenging but incredibly rewarding walk! After a one-hour walk, we reach a set of stunning falls tumbling off the surrounding 65m cliffs. After our walk, we head into Kununurra to resupply before heading remote for a week! While we're in town, we'll check out the Diversion Dam Wall and Ivanhoe Crossing. Today will have a relaxed pace to it and should allow everyone to have a rest and catch-up on things. After a nice evening drive home, we'll have dinner under the stars and cliffs at El Questro Station.

#### Day 9 (BLD, H) Drysdale River Station

With an early start, we take our first big bite out of the Gibb River Road! We cross the mighty Pentecost River and visit the beautiful Cockburn Range lookout. We'll take a break at Ellenbrae Station for some of the country's finest scones. We nudge north towards the Mitchell Plateau and make camp at Drysdale River Stn. On our way into camp, we take a short drive to do some bird watching. Tonight, we have dinner at the station.

#### Day 10 (BL, HT) Mitchell Plateau

Heading north, we visit some of the oldest and most pristine rock art in Australia at Munurru. We stop for lunch and a swim at the King Edward River. A short 15-minute walk from today's camp will take you to Little Mertens falls, a great swimming spot. Here you will find some of the best rock art in the Kimberley!

#### Day 11 (BD, HT) Mitchell Plateau

This is an incredibly special day: we walk through stunning gorges and creeks to reach Mertens and Mitchell Falls, deep in the Mitchell Plateau. Our return trip will be via a helicopter and include a short scenic flight (covered by us).

#### Day 12 (BLD, HTF) Mt Barnett

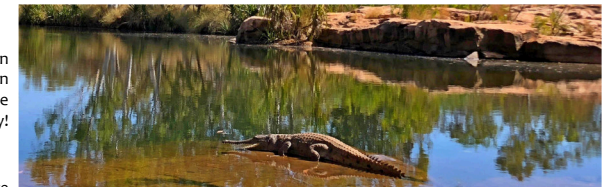
Today is a big transit day to get back on the Gibb and heading west. We'll stop at the Warmarri Rock Art site on the way south to stretch the legs. We finish at Mt Barnett Station today where you can relax and enjoy a visit to the river.

#### Day 13 (BLD, HT) AWC Sanctuary

Today we will have an early start and the adventurous can tackle the stunning Manning Gorge walk. Others can relax by the river at camp. We have lunch back at camp and then head west to Galvans Gorge and have smoko here. Today we break up the drive and finish our day at an Australian Wildlife Conservancy property. This day doubles as a buffer day in case of unforeseeable events on the Gibb.

#### Day 14 (BLD, HT) Silent Grove

This morning we continue exploring gorges as we head along the Gibb River Road. Today is a nice, relaxed day.



#### Day 15 (BLD, HT) Windjana Gorge

This morning we'll pack up camp and then head off to Bell Gorge. As we head further across the Gibb River Road we take in the scenery at Wunaamin Miliwundi Ranges Lookout. We wrap up the day with a stunning sunset in Windjana Gorge.

#### Day 16 (BD, HTF) Willare Bridge

This morning we head to Tunnel Creek where we walk and swim through the impressive 750m long tunnel. We then head west into Derby and visit a few unique sites around town including the Boab Prison Tree and Myall's Bore (& the 125m cattle trough). We check out the famous Norval Gallery, showcasing some amazing Derby & Kimberley Indigenous art. We continue west, our final dash across the Gibb River Road and make camp at Willare Bridge Roadhouse.

#### Day 17 (BL, HT) Broome

This morning we head into Broome. Our first stop of the trip is the impressive Willie Creek Pearl Farm. Here we gain a unique insight into the fascinating process of modern pearl farming. We embark on a boat cruise to view oysters in their native environment, open a live pearl oyster and learn about the farm. We then return to Broome, take in the views at Gantheum Point and visit Matso's Brewery for a tour. Drop-offs will be mid-late afternoon.

### Highlights

- Pearl Farm & Boat Cruise
- Tunnel Creek & Windjana Gorge
- Famous Kimberley Rock Art
- Bell, Galvans, Manning Gorge
- Mitchell Plateau & Falls
- Gibb River Road
- Purnululu (Bungle Bungles)
- El Questro Station
- Kununurra & Lake Argyle
- 2x Scenic Heli Flights
- 2x Boat Cruises

### Inclusions

#### Guides

- 1 Ecologist Guide & 1 Cook

#### Transportation

- 19-seat, Airconditioned 4WD Coach

#### Accommodation

- 4-Man Tents (sleeps 1 or 2), 6 ft high
- Mattress, pillow, sheets & blanket

#### Meals Included!

+5 Dinners Out

+7 Outsourced Tours Included!

Info@Cockatours.com 0404 309 308

